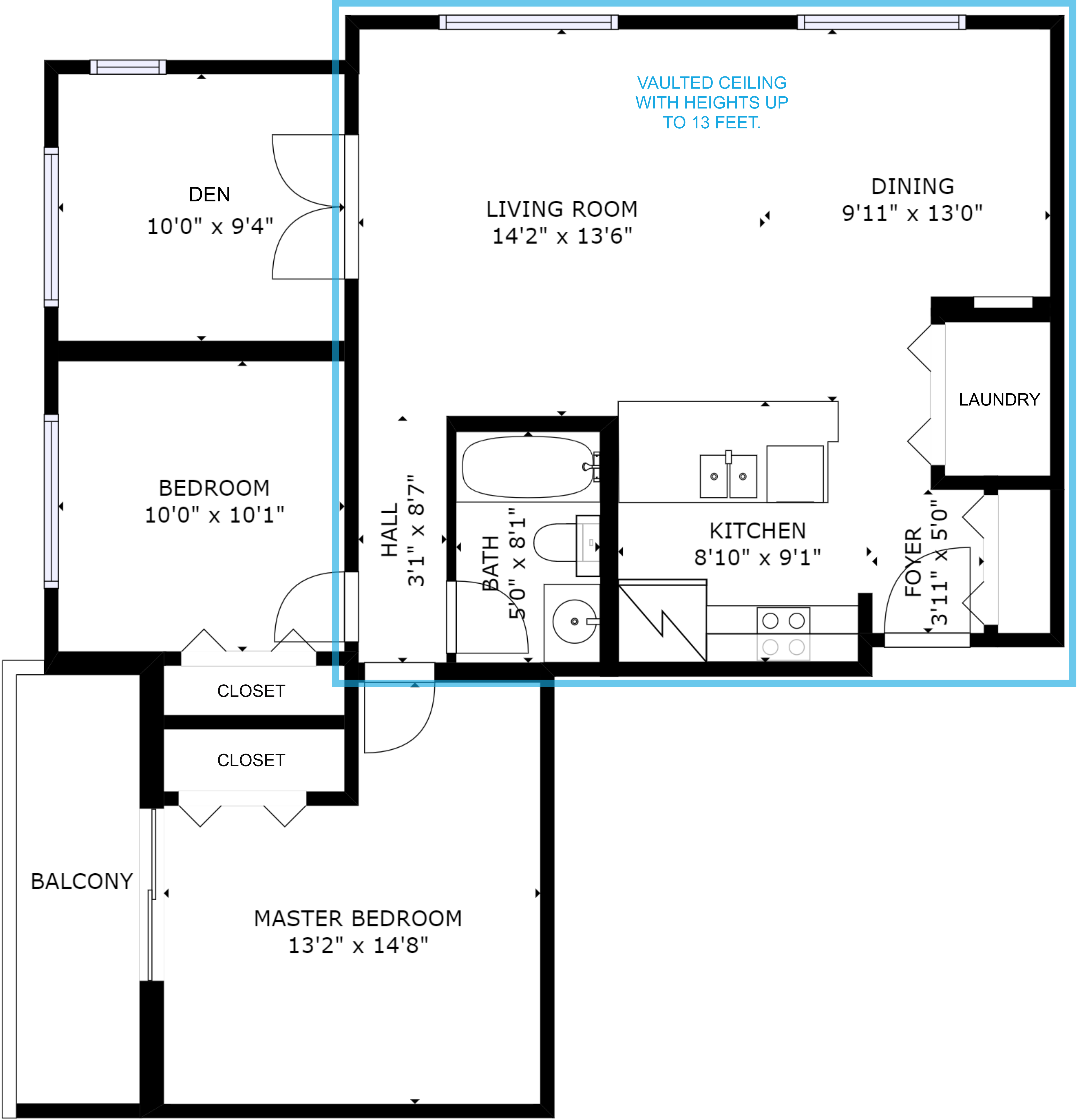


421-2829 Peatt Road
Langford, BC V9B 3B5

VALENTINE PLACE

TOP FLOOR
CORNER UNIT



AREA OF VAULTED
CEILING

FINISHED LIVING SPACE
960 SF

DECK
65 SF

Floor plans created by Jeff Martens PREC*, Listing Realtor

SIZES AND DIMENSIONS ARE APPROXIMATE, ACTUAL MAY VARY.